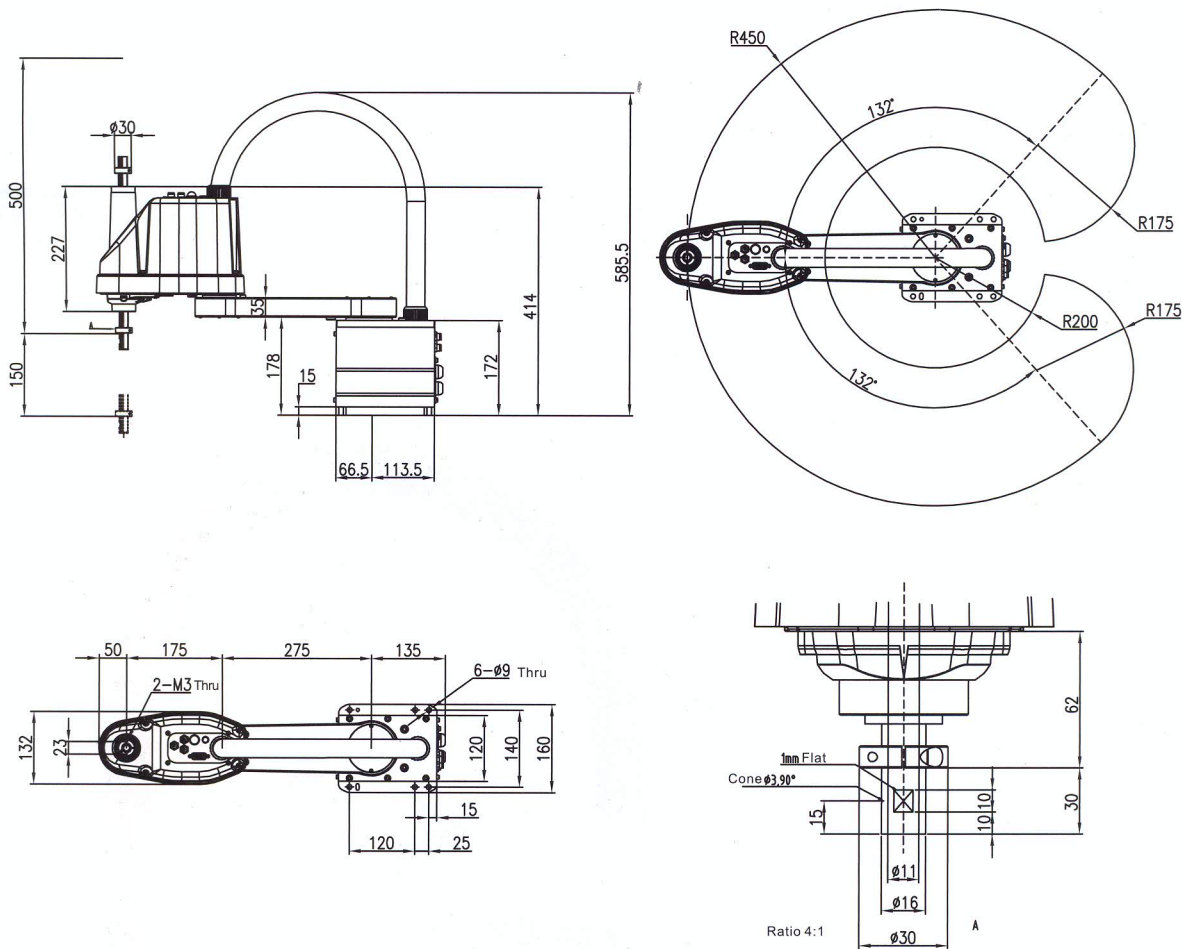


● Working Space Structure



● Parameter

EDH4003

Controlled axes	Max. motion range [°]	Max. speed [°/sec.]	Allowable moment [Nm]	Allowable moment of inertia [kg·m ²]	Controlled axes	
J1	±132°	6000	-	-	Max. payload [kg]	3
J2	±141°	6000	-	-	Repeatability [mm]	±0.02
J3	150mm	1100	-	-	Max. reach [mm]	450
J4	±360°	2600	-	0.05	Temperature [°C]	0-45
-	-	-	-	-	Humidity [%]	20-80
-	-	-	-	-	Weight [kg]	14
-	-	-	-	-	Power [KVA]	0.7